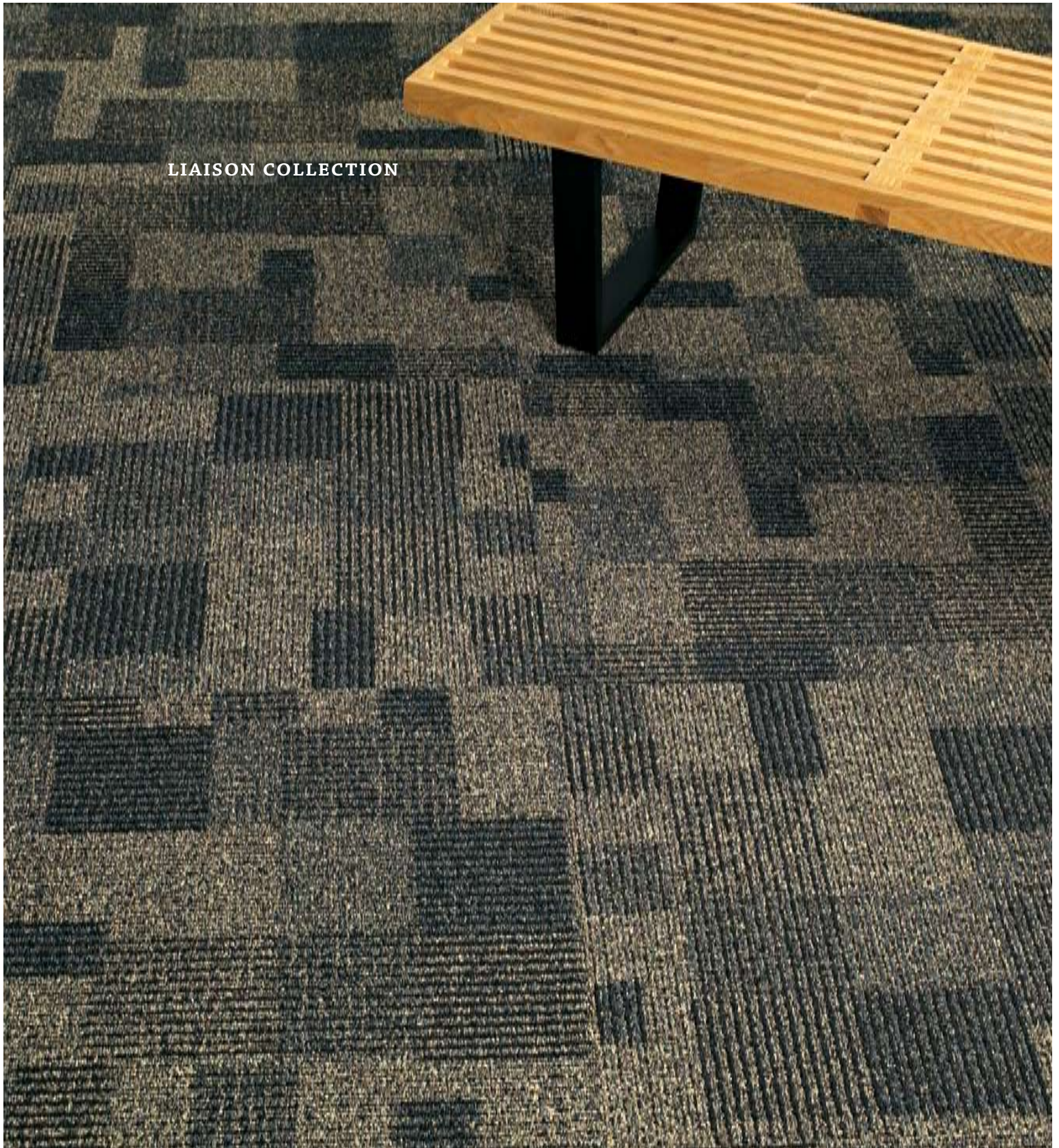


new Work.



LIAISON COLLECTION

The first line of defense.

The Liaison Carpet Entryway System protects your flooring investment by trapping excess dirt and moisture at the door. ReCoarse, Ruffian and Ruffian Ridge are designed to work individually or in combination for a comprehensive plan.

MANNINGTON
COMMERCIAL

specifications

RECOARSE / RUFFIAN / RUFFIAN RIDGE

Solution dyed modular and six foot
 Type 6,6 (ReCoarse)
 Type 6,6 and Polypropylene (Ruffian / Ruffian Ridge)
 Limited 15-Year ColorSafe® Bleach Resistant Warranty (ReCoarse and Ruffian)
 Limited 15-Year XGUARD™ Stain Resistant Warranty (ReCoarse and Ruffian)
 ISO 14001 registered manufacturing facility
 Meets CRI Green Label Plus certification (ReCoarse and Ruffian)
 Contributes to LEED credits

ReCoarse – Infinity® RE

- Contains 10% post-consumer and 20% pre-consumer recycled content by total product weight
- SCS Sustainable Choice™ Platinum/EPP and California Platinum EPP
- Impermeable moisture barrier
- Eliminates wick-back staining
- Superior tuftbind wet and dry
- Superior dimensional stability
- Passes British spill test
- 24" x 24" modular carpet tile
- Limited Lifetime Wear and Backing Warranty

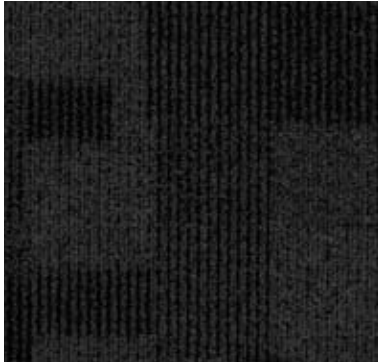
Ruffian – Infinity® Modular / Infinity® Six Foot

- Impermeable moisture barrier
- Eliminates wick-back staining
- Superior tuftbind wet and dry
- Superior dimensional stability
- Passes British spill test
- 24" x 24" modular carpet tile
- 6' broadloom (Ruffian only)
- Limited Lifetime Wear and Backing Warranty

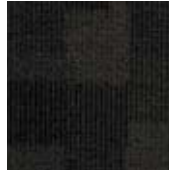
Ruffian Ridge

- Impermeable moisture barrier
- Eliminates wick-back staining
- Superior tuftbind wet and dry
- Superior dimensional stability
- Passes British spill test
- 18" x 18" modular carpet tile
- Limited Lifetime Wear and Backing Warranty

RECOARSE



boulevard blue



touring taupe



byway brown



terra cotta trail



gangway green



traverse tan

RUFFIAN



breccia



shale



feldspar



slate



granite



quartzite

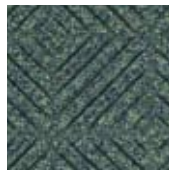
RUFFIAN RIDGE



breccia



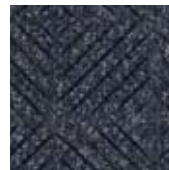
shale



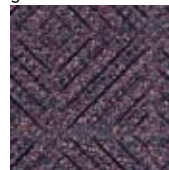
feldspar



slate



granite



quartzite