



Mannington Commercial is offering a **ready-to-install basketball court**, perfect for K-12 schools. This kit comes **complete with all basketball court lines, pre-cut and ready for installation.**

The lines provided are Mannington's **SolidPoint™ 311 Midnight Black**. SolidPoint is one of our Premium Visual Tiles, composed of 85% natural limestone (readily available) and contains post-industrial (pre-consumer) recycled content. SolidPoint's softly mottled appearance can **hide scuffs, scratch marks and dirt**, which is ideal for gym floors.

For the field color, we recommend any of our VCT products – Essentials™ or Designer Essentials®.

Featuring SolidPoint™ Premium
Visual Tile for Basketball Court Lines

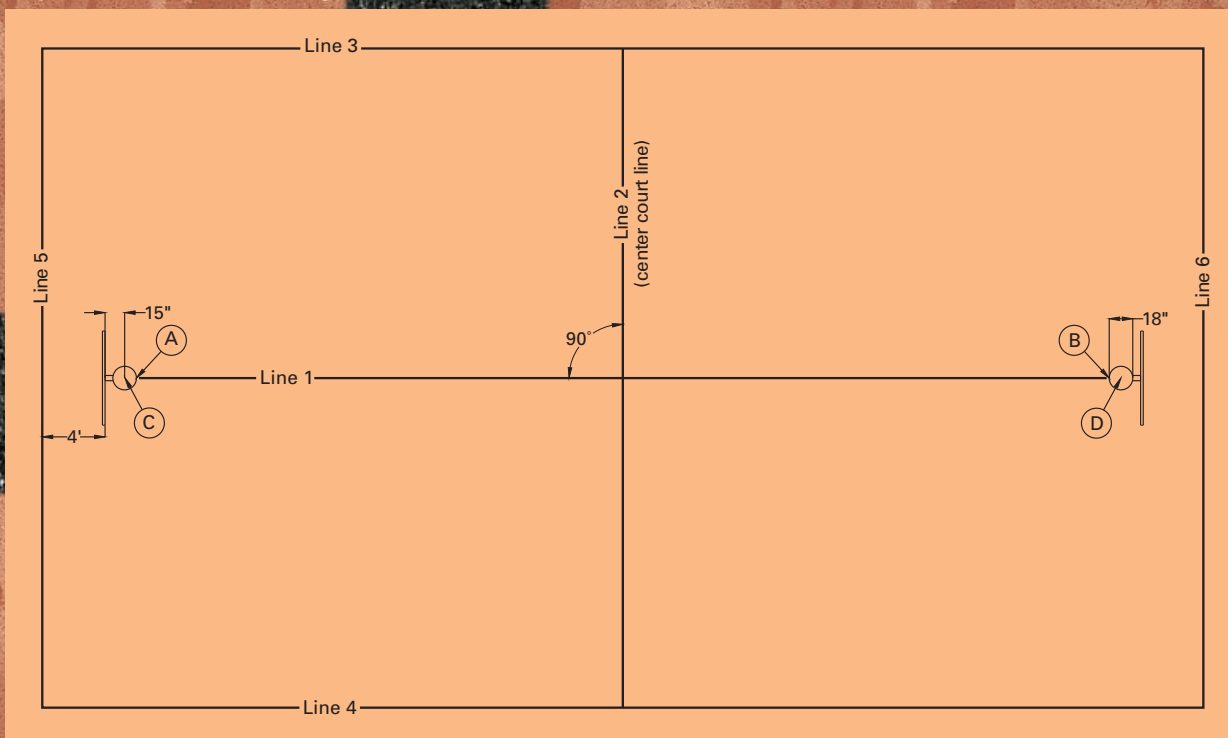
SolidPoint™ 311 Midnight Black

GYM KIT INSTALLATION INSTRUCTIONS

- 1 Use a plumb bob to mark the floor directly under the front edge of the goal at each end of the court (A and B). Measure back 9" from points A and B to locate the center of the goals (C and D). Create Line 1 by snapping a chalk line between points A and B.
- 2 From the midpoint of Line 1, snap a perpendicular chalk line to form the center court line (Line 2).
- 3 Use the center court line (Line 2) to determine the boundaries of the court and snap chalk lines on all four sides (Lines 3,4,5,6).



Figure 1 Total court length should be 75'.



Featuring **SolidPoint™** for Basketball Court Lines.
We recommend Essentials™ or Designer Essentials™ VCT for the field.

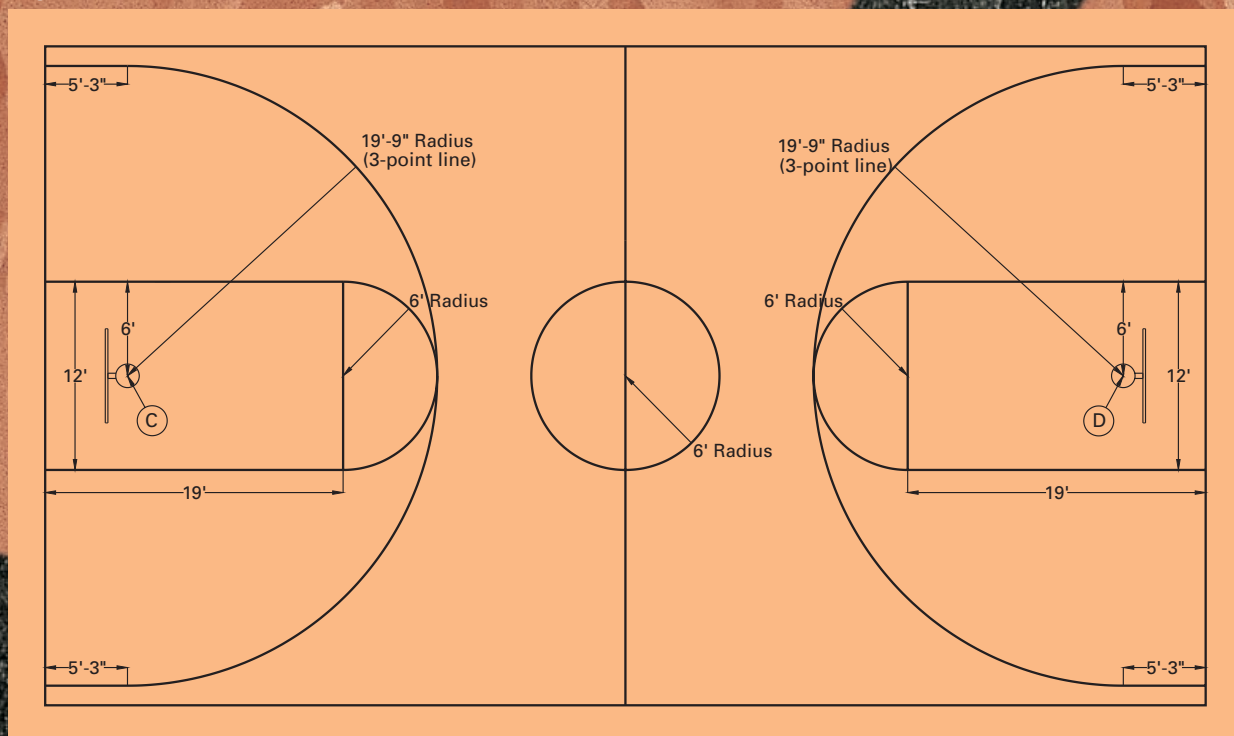


PLEASE NOTE: All procedures for installing Mannington Commercial SolidPoint™ PVT apply to the installation of the basketball court kit. The layout of the basketball court is based on the location of the basketball goals.

IMPORTANT: If you have not already done so, please take a moment to verify that the backboards are installed properly and are the correct distance apart prior to installation.

- 4 Draw all lines for the key and 3-point lines. Use the center of the goals (C and D) as the starting points. Refer to the instructions in "How to Draw a Perfect Arc or Circle" below for drawing the 3-point line and key circle.
- 5 Draw a circle at the center of the court with a radius of 6'. (Read "How to Draw a Perfect Arc or Circle" above Figure III.)
- 6 Install the 2" x 24" SolidPoint™ strips along straight chalk lines drawn in steps 1 through 4 as shown in Figure III. This includes the center-line, boundary lines, key sidelines and free-throw marks. **Do not install any arcs at this point.**

Figure II



Featuring SolidPoint™ Premium Visual Tile for Basketball Court Lines.

We recommend Essentials™ or Designer Essentials® VCT for the field.

7 Begin laying 12" x 12" VCT at the center court line. Be sure to transfer the center court, key circle center and goal reference marks onto the installed tiles as you lay tile over them.

a. If your court has only one center court line, cut a 1" strip off the 12" x 12" tiles on either side of the line and install these next to the SolidPoint™ strip as shown in Figure III.

b. If your court is less than 75' long and has two center court lines, place a 12" x 12" tile along either side of the exact center of the court and continue laying tile until both center court lines are reached. Cut the 12" x 12" tile to match the feature strip as needed.

8 Install all 12" x 12" tile for the remainder of the court.

9 Locate your center court and goal reference marks and re-scribe the center circle, 3-point lines and key circles onto the installed tile.

Position the arced feature strips along the scribe lines

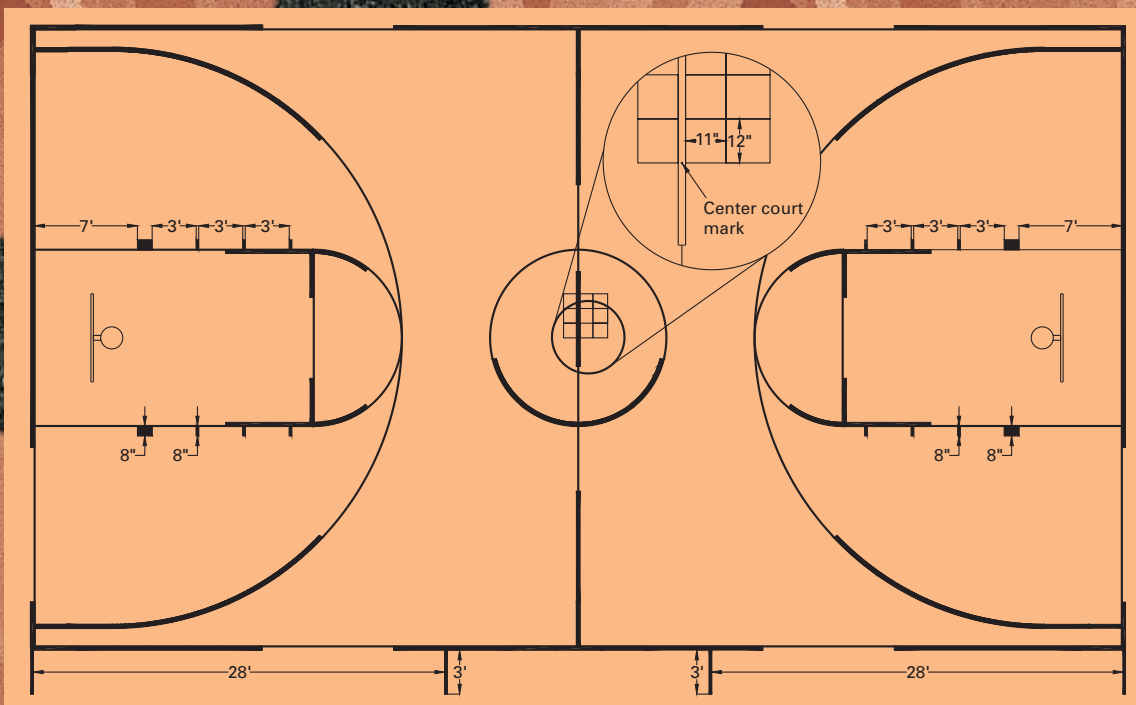
10 and adjust as needed by warming them with a hot air gun. Hold the arced feature strip securely and score along the opposite side with a knife.

11 Lay the SolidPoint™ strips aside and warm the section to be removed with a hot air gun. Cut the scored lines all the way through the installed tile and remove the section to be replaced with arced feature strip. Scrape the uncovered adhesive residue smooth, spread new adhesive and install arced SolidPoint™ strips.

Packaging

	Box 1	Box 2	Box 3	Total
Weight Per Pounds	110	21	30	161
Number of Pieces Per Box	221	42	60	323

Figure III



MANNINGTON
COMMERCIAL
800 241 2262 / www.mannington.com